

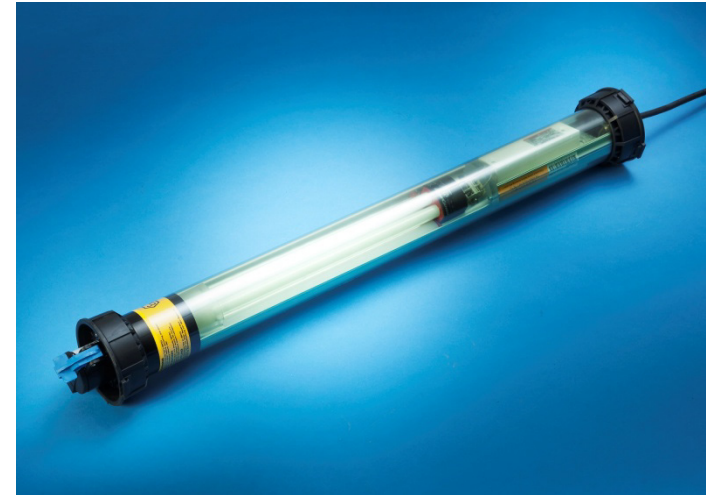
Data sheet

CentaurSlam® Hornet 2x36W



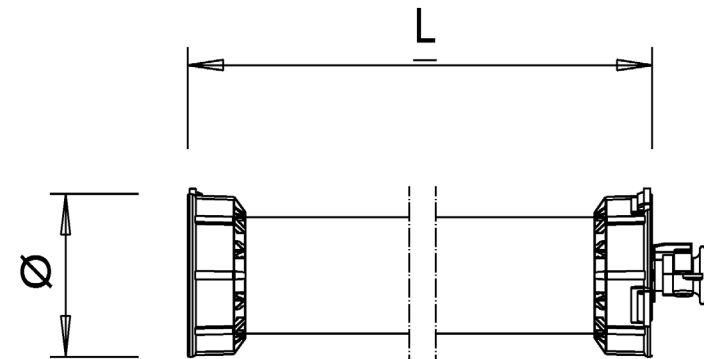
Portable Ex Work Light

- **Ingress protection**
 - IP 66 (IP rating can vary depending on socket type)
- **Area of operation**
 - Zone 1, Zone 21
- **Operating temperature**
 - -40°C to +40°C (A version)
 - -20°C to +40°C (C version). Minimum temperature depends on socket properties)
- **Light source**
 - Compact fluorescent lamp, color temperature 4000K
- **Ballast**
 - High frequency electronic ballast with end of life protection
- **Plug and socket options**
 - ATX, CEAG, Marechal, Stahl
- **Cable**
 - H07BQ-F (other types available on request)
- **Bonding**
 - Through the supply cable (3 pole and 2 pole+E configuration).
 - External metal parts on 2 pole configuration need to be bonded with separate bonding wire.



CE II 2 GD Ex emb IIB T3 Gb
 II 2 GD Ex t IIIC T 90 C Db

	L	Ø
CSH236	865	115



Data sheet

CentaurSlam® Hornet 2x36W

CENTAURSLAM®
HORNET

Portable Ex Work Light

- **Light output**
 - 5800 lumens
- **Input voltage**
 - AC/DC 230V, 110V, 42V, 24V (50/60Hz)
 - 3P, 2P+E or 2P configuration
- **Weight**
 - Approx. 2.7kg (without cable or accessories)
- **Variants**
 - A (Cable in – without socket)
 - B (Cable in – cable out), linkable
 - C (Cable in – socket out), linkable

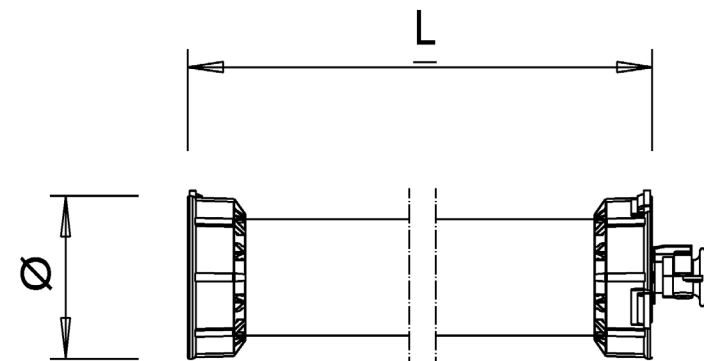


CE mark

II 2 GD
II 2 GD

Ex emb IIB T3 Gb
Ex t IIIC T 90 C Db

	L	Ø
CSH236	865	115



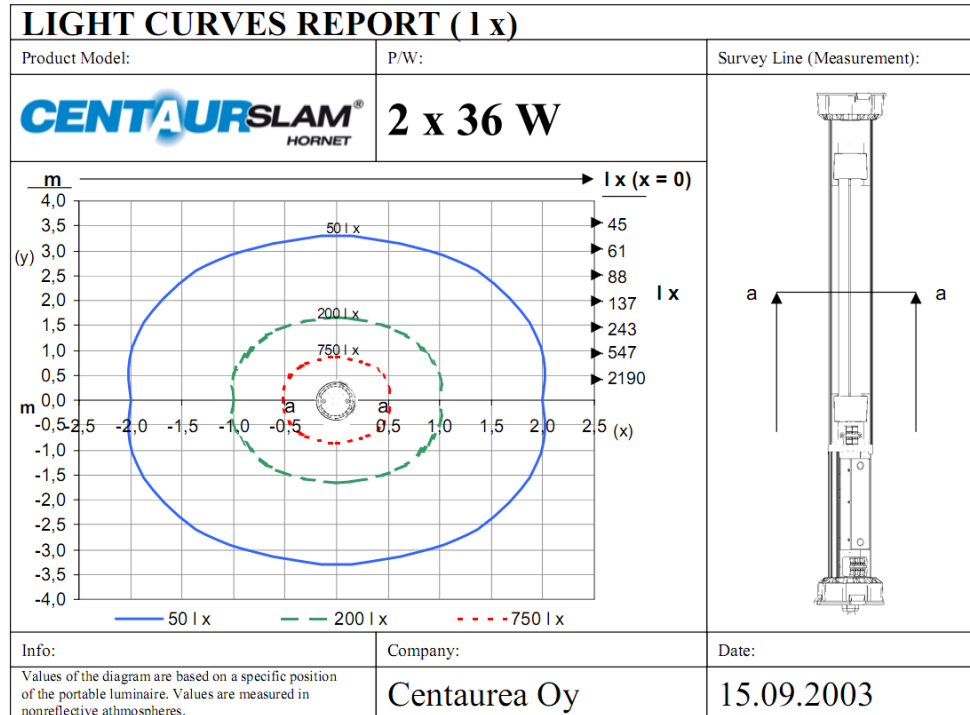
CENTAUREA
— Lighting the way to safe work —

Data sheet

CentaurSlam® Hornet 2x36W



Portable Ex Work Light



II 2 GD
II 2 GD

Ex emb IIB T3 Gb
Ex t IIIC T 90 C Db

	L	Ø
CSH236	865	115

